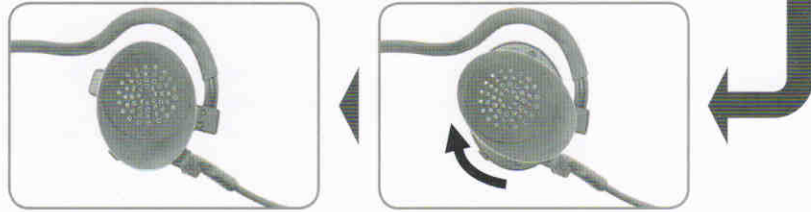
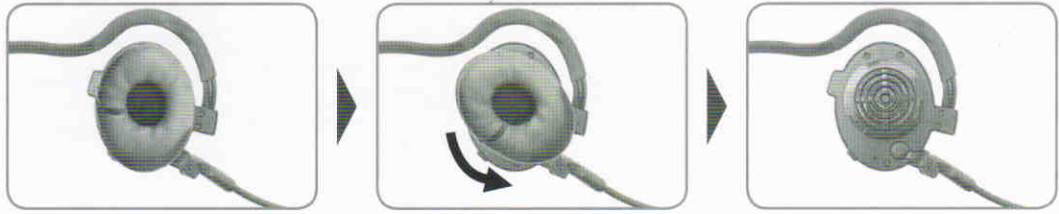


SPH10 Earpad replacement guide



Standard earpad



Rubber earpad

SENA
www.SenaBluetooth.com

SPH10 Quick Start Guide

Button	Description	Duration	LED	Beep
Phone Button + Jog Dial	Power-on	1 sec	Solid blue	Ascending beeps
	Power-off	Tapping	Solid red	Descending beeps
Phone Button	Mobile phone pairing	5 sec	Blue & red alternatively flashing	High-tone multiple beeps
	MP3, GPS pairing	5 sec	Blue & red alternatively flashing	High-tone multiple beeps
	Voice activated phone answering setting	8 sec	Red flashing	Mid-tone single beep
		Phone Button to enable / Jog Dial to disable		
	Factory reset	12 sec	Solid red	High-tone double beeps
		Jog Dial within 5 sec to confirm reset		
	Make & answer phone call	Tapping	-	-
Jog Dial	Intercom pairing	5 sec	Red flashing	Double-tone beeps
		Jog Dial of any one of the two headsets		
	Voice activated Intercom setting	8 sec	Solid red	Mid-tone single beep
		Jog Dial to enable / Phone Button to disable		
	Start/end intercom conversation	Tapping	-	-
	Reject incoming call	Tapping	-	-
	Call transfer	Tapping	-	High-tone short/longbeep
	Volume adjustment	Rotating	-	-
	Track forward/ back	Rotating w/ pressing	-	-
	Play/pause Bluetooth music	1 sec	-	Mid-tone single beep

SENA
www.SenaBluetooth.com